



01

02 TOPCon

03

04 TOPCon

05 TOPCon

01

TOPCa` HJT BC

PERC

TOPCa`



02

FAB5a`

\$" \$(

TOPCa`

	TOPCa`
BC	0.75%
PERC	2.86%
HJT	5.24%

\$" \$\$ \$" \$'

TOPCa`

1.25%

TOPCa`

#' "" #, #,

#' "" MW #' ""

\$'

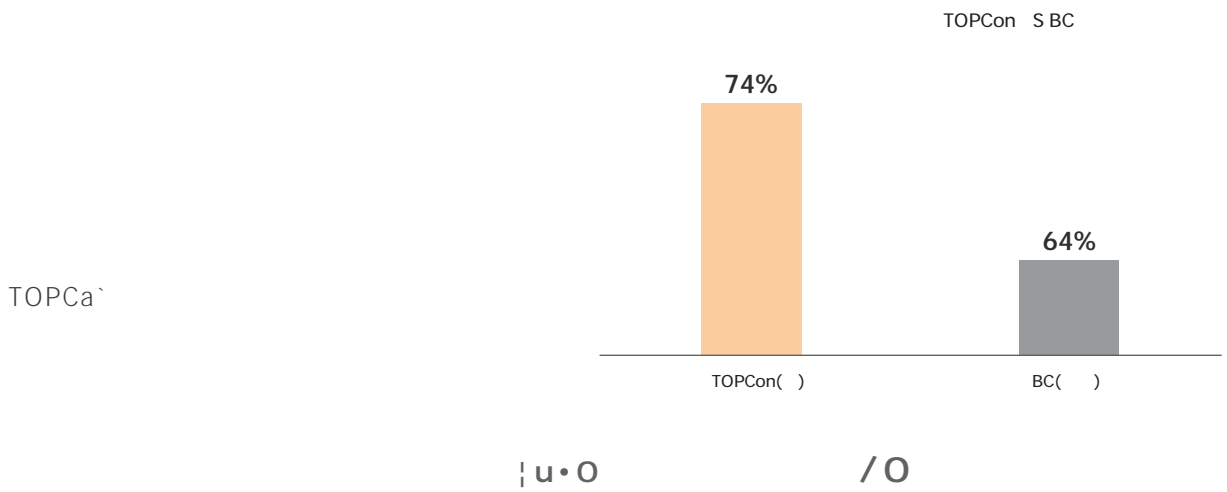
TOPCa`

2022 - 2025

		2022	2023	2024	2025	
N	TOPCon 182mm 144	182.27	175.23	164.14	175.63	174.32
N	BC 158mm 156	179.77	170.66	161.62	169.71	170.44

03

BC **64%** TOPCa` **74%—80%**



(m²)	()	(%)	BC (W)	TOPCon (W)	TOPCon s BC (%)
900	25	7-8	793.32	798.86	0.7
		8-9	803.15	814.63	1.43
		9-10	806.77	824.32	2.18
		10-11	803.27	824.38	2.63

! u • 0 Voč/ 0 **2%**

04 FAB5a`

#ž#

#

TOPCa`

TOPCa`

TOPCa`

TOPCa`

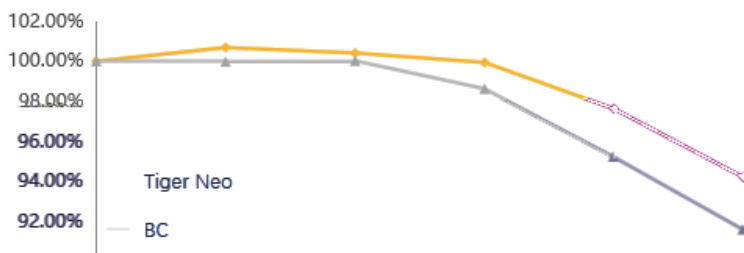
BC

TOPCa`

TOPCa`



特性	TOPCon	BC
电极结构	电极位于电池片的正反面	电极在电池片背面交叉指式集成
物理隔离	优势：提供天然的物理隔离，确保正负极之间有良好的绝缘	挑战：相邻的正负极间距极小，导致难以实现有效的隔离
遮挡时的性能	低风险：内部绝缘层有效阻断反向电流	高风险：反向电流会横向流动形成短路



200W/m²

- Tiger Neo: 95%~98%
- BC: 93%~95%

↑ 2%-3%

04 FAB5a`

#Z\$

TOPCa`

BC

&" " ` _

(" " ` _

BC

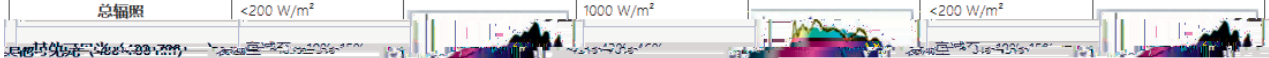
PI N

%

. % ` Nba k

TOPCa`

时段	清晨	正午	黄昏
总辐照	<200 W/m ²	1000 W/m ²	<200 W/m ²



TOPCa`

04 FAB5a

#Z%

%

%

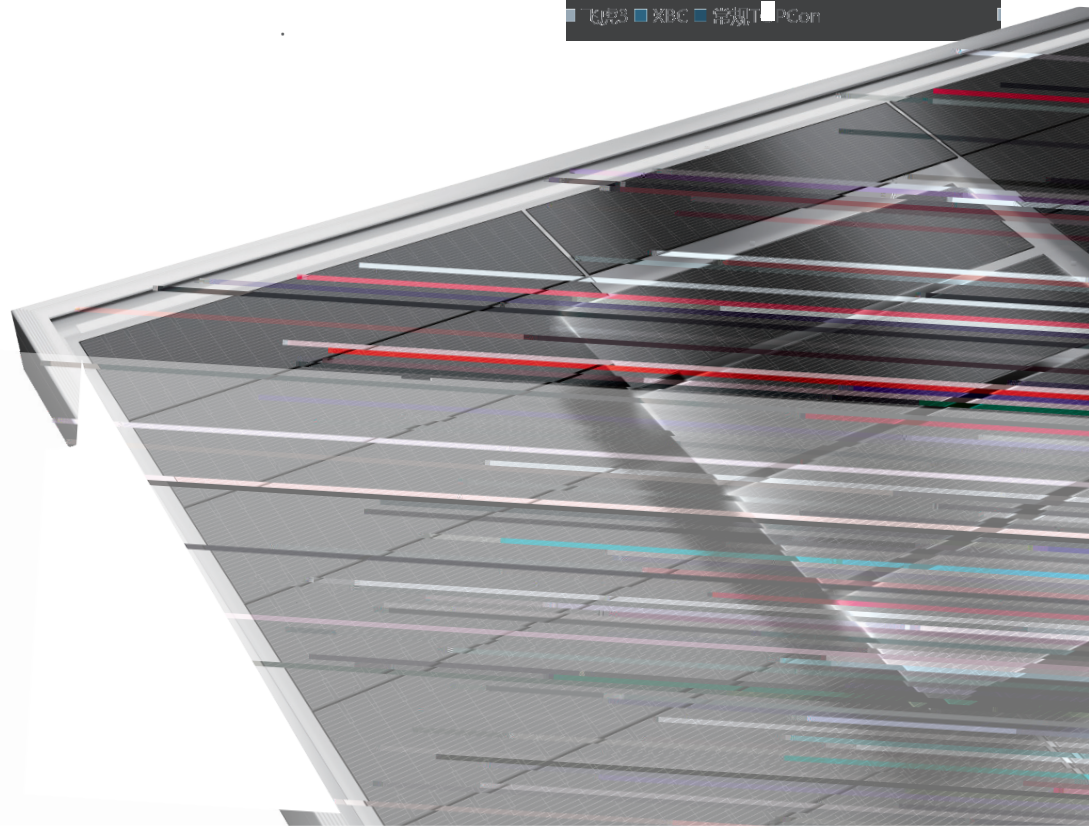
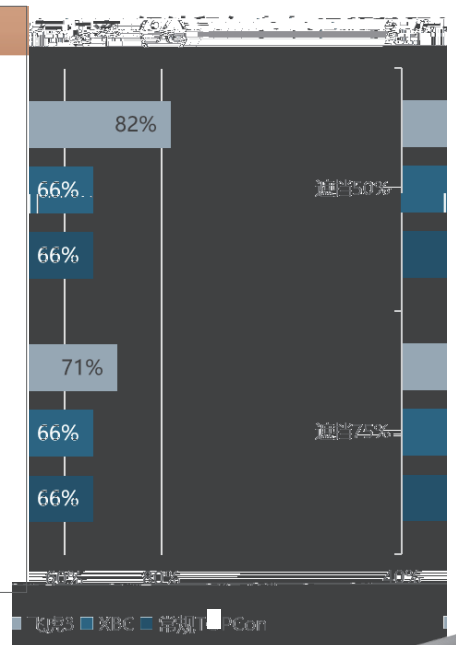
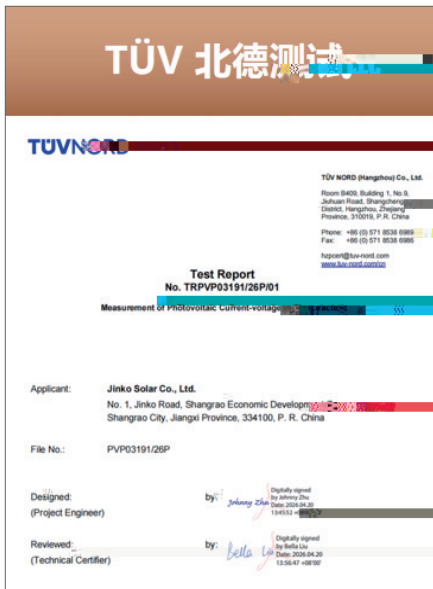
†

% ' " ,) ' .

BC # (.

TÜV TÜV

At



05 FAB5a`

(# ') "" W \$) . Ž\$* . \$' Ž+ .
TOPCa`

